

EXPLORE!

Let's Explore **SPRING!**
Exciting Programs
for Kids Grades K–5

New Adventures to **EXPLORE** in May Join us for discovery in the park!

Thursday, May 6, 2021

Signs of Spring

Grades: K–5; Cost: \$5 member, \$6 non-member.

Location: Pine Hill Recreation Area
4 to 5 p.m.

The group will go on a hike—a spring scavenger hunt looking for animal tracks, feathers, flowers, butterflies and more. Activities including listening to a nature story, and planting a flower to take home.



Thursday, May 20, 2021

Going on a Bug Hunt

Grades: K–5; Cost: \$5 member, \$6 non-member.

Location: Pine Hill Recreation Area • 4 to 5 p.m.

The instructor will take the group on a guided bug/insect hunt—turning over logs, looking under leaves etc. Students will also use “bug box magnifiers” and hand-held lenses to inspect their finds up close.



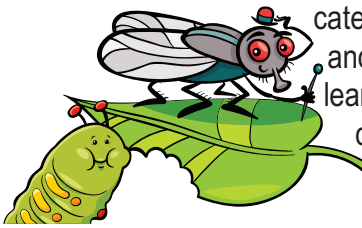
Thursday, May 13, 2021

Leaf Animals

Grades: K–5; Cost: \$5 member, \$6 non-member.

Location: Pine Hill Recreation Area • 4 to 5 p.m.

Students will collect leaves and glue them on paper to create “leaf animals” of their choice, then take a hike, discovering interesting items in nature, including trees that are especially important for producing caterpillars or beautiful moths and butterflies. Kids will learn about “leaf miners,” critters who live inside leaves.



Thursday, May 27, 2021

Nature Journaling

Grades: K–5; Cost: \$5 member, \$6 non-member.

Location: Pine Hill Recreation Area • 4 to 5 p.m.

Students will learn how to make their own “cut and fold” nature journal out of paper. They will decorate the cover with their choice of ink stamps and their own drawings. They will also take a hike to find a special spot to sit in the woods where they can draw or write—or both—in their journals, using colored pencils.



• SAFETY MEASURES IN PLACE FOR ALL PROGRAMS •

Location: Pine Hill Recreation Area, Waynesboro, Pa. | After School on Thursdays: 4–5 PM

More details at www.NatureAndCultureInstitute.org

• Pre-registration and payment in advance are required. Call or email to register. •

717-762-0373 • info@natureandcultureinstitute.org

Thank you to our Sponsors!

**The Anderson Family Fund, in memory
of Vida Mae Anderson • Bruce and Pam Rowland**

Additional support from Today's Horizon Fund contributors: The Nora Roberts Foundation; The John R. Hershey Jr. and Anna L. Hershey Family Foundation; Alma W. Oyer; APX Enclosures, Inc.; and the Carolyn Terry Eddy Family: Carolyn, with daughters Connie Fleagle & Kim Larkin.

Facility support courtesy of Washington Township.